



ARENA TELEVISION

LIVE
PORTRAIT

Arena OBX

OB Van

General Contact

Arena Television Ltd.

Hangars 4, 5 & 7
Redhill Aerodrome, Kings Mill Lane
Redhill, Surrey
RH1 5JY
United Kingdom

Peter Love

Tel: +44 1737 822011

peter.love@arena-tv.com
www.arena-tv.com/

In an industry dominated by multinationals, Arena is proud to be British and pay all taxes in the UK.

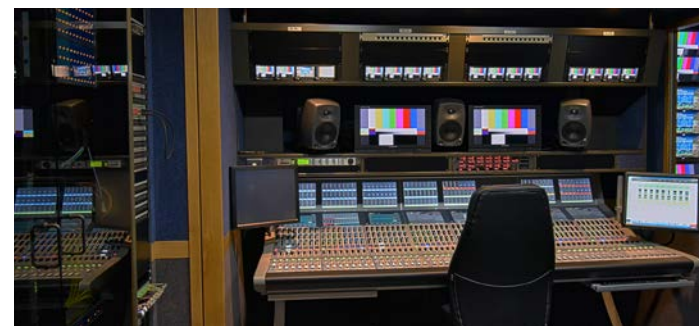
Arena holds contracts with the nation's major broadcasters to provide coverage of events, music, large studio shows and sport. Arena is a Telegraph 1000 business that has remained in continuous family ownership for approaching 30 years. Arena continues to pioneer by introducing the world's first IP-based UHD High Dynamic Range OB fleet. The new triple-expands (OBX, Y & Z) all feature UHD/HD/SD multicast technology. They are based around a powerful IP core developed in association with Grass Valley and Cisco. This approach is much more flexible than traditional baseband.



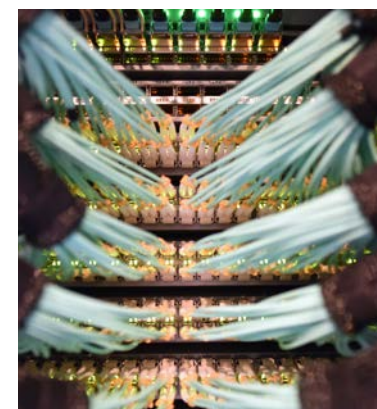
Production Area



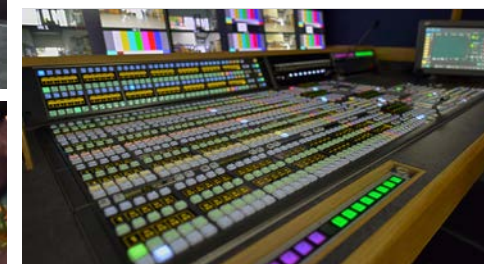
Sound Area



Camera Shading Area



SloMo Desk



Grass Valley Vision Mixer

Cisco Fibre Patch

TECHNICAL
SYNOPSIS

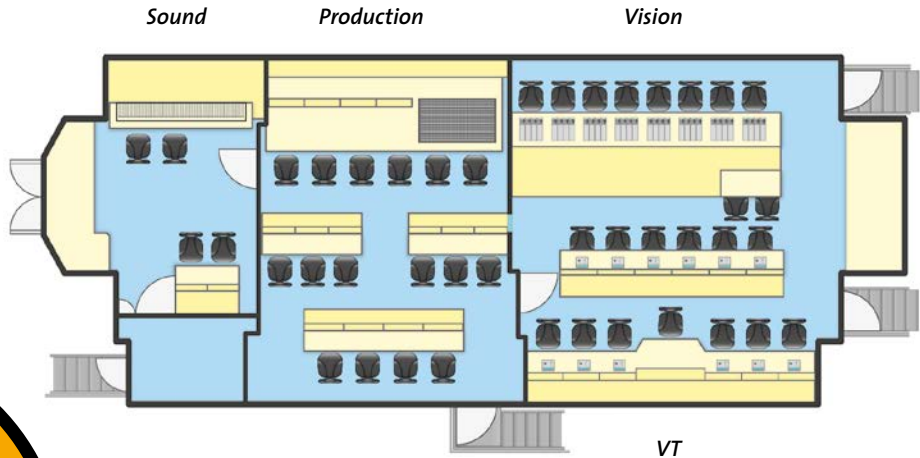
Arena OBX

OB Van

Double Expando:
15,7m Long, 4,0m High, 2,55m Wide – Expands to 6,2m
Shifts between 4K/UHD+HDR |
Super SloMo | 1080p | 1080i | 720p

Video

- 32 Grass Valley LDX-86N UHD (Fiber)
- 32 Grass Valley XCUs (Fiber)
- 8 Super SloMo Cameras Grass Valley/Sony/I-MOVIX
- Lenses from Canon, UJ86, UJ90, CJ12, CJ20
- Heavy Duty Tripods from Vinten
- Vision Mixer:
 - Grass Valley HD/4K Kayenne K-Frame Switcher
 - 14 Panasonic Monitors with Multi-Viewer (200+ images can be displayed)
 - Grass Valley Kaleido KMX Multivieer/Splitter
- Character Generator: As requested by Clients
- Monitors in Camera Shading Area from Sony & Canon
- 12 EVS XT3/XT4K 12 Ch Full Editing Replay Servers
- UHD SloMo/ SuperSloMo Devices from EVS and Grass Valley (up to 12)
- Digital Glue from Axon
- No Video Matrix: This is an IP truck so all data flows everywhere without a standard matrix using GV Nodes and a Cisco datacentre switch



Audio

- Audio Mixer: Calrec Apollo (64 fader)
- No Audio Router: This is an IP truck so all data flows everywhere without a standard matrix using GV Nodes and a Cisco datacentre switch
- Audio Monitoring: Genelec, 5.1 Surround Sound with Dolby Atmos
- Audio Measurment: Dolby/Calrec
- Audio Multi-track: As requested by Clients
- Microphones from Sennheiser, beyerdynamic

Intercom/Communication

- Matrix: Riedel Artist

Special Features

- This OB unit is a world first being the first large-scale implementation of a native IP work flow capable of multi-casting in UHD HDR, UHD SDR, HD and SD. Data is fully IP from the camera CCU through the vision mixer to transmission. This makes the truck considerable more capable than the existing baseband approach that uses 4 copper cables for each path.
- IP maintains and enhances the high production standards of an HD workflow
- No bottlenecks associated with legacy baseband Quad-HD designs
- Supports both GV's (and Sony's) native UHD cameras
- A base-band Quad-HD layer for legacy and back-up purposes
- Scalable on-site and off-site remote production as standard
- Multi-format HDR as standard; upgradeable to 4K high frame rates and 8K
- New outboard fibre-nod technology reduces cable rigging time and costs
- Highly scalable allowing requirements to change on the day
- Cisco 10GbE and 40GbE switch; SMPTE 2022-6 with TR03/04 support
- UHD 2Si for significant benefits in resilience and monitoring

Coach Builder

- ASGB

System Integrator

- Videlio